

Oil COMPANY

PROFESSIONAL GRADE FEATURES



HEAVY DUTY SOLID SPUN DISCS WITH ROLLED EDGES
- not stamped, for greater strength, made with first of its kind CNC robotic spinning cell

LOW PROFILE OUTLET RISER and open drum slot design
- Hidden under hose

EXTERNAL FLUID PATH WITH FULL FLOW NPT SWIVEL for fast & easy maintenance

1/2 - 3/4" Brass | 1" Nickle Plated Steel | 1 1/4- 1 1/2" Aluminum In-line Swivel



EXTERNAL / ENCLOSED FACTORY TUNED AND MATCHED CARTRIDGE-STYLE SPRING MOTOR, easily removed for safe & convenient replacement

HIGH QUALITY STEEL CONSTRUCTION with our durable CPC™ powder coat finish

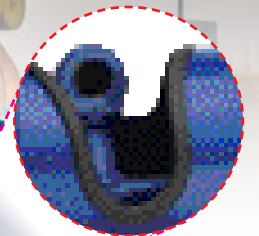
4-WAY ENCLOSED STAINLESS STEEL ROLLERS included

ADJUST TO WALL, FLOOR & OVERHEAD POSITION with optional top 4-way roller bracket

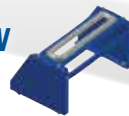
NON-SPARKING BRONZE LOCKING MECHANISM with multi-position lock ratchet secures hose at desired length in dangerous combustible environments

POSSIBLE FIELDS OF APPLICATION

- Oil Dispensing System
- Oil Salvage/Waste Dispensing System
- Refueling
- Offshore
- Oil Drilling Companies
- Oil & Gas Pipeline
- Mining / Railroad Operations
- Oil Transport



Do we still use this swivel on this reel?



www.coxreels.com

800.COX.REEL

P: 480.820.6396

F: 480.820.5132

E: info@coxreels.com



SP SERIES

- External fluid paths with machined from solid brass 90° full-flow NPT swivel inlets
 - Swivel Seals: NITRILE (AFLAS on 1" models)
 - Reel features a sturdy box-style frame design. Reel adjusts to wall, floor, vehicle & overhead position
 - Long lasting self-lubricated flange bearings for smooth rotation
- * Supplied with fuel hose

MODEL	I.D.	O.D.	FT.	PSI	APRX. LBS.	W x H x L
SLPL-4100	1/2"	3/4"	100	300	96	18 1/2 x 20 1/2 x 22 7/8"
SLPL-550	3/4"	1 1/16"	50	300	86	19 5/8 x 20 1/2 x 22 7/8"
SLPF-550*	3/4"	1 1/16"	50	300	107	19 5/8 x 20 1/2 x 22 7/8"
SLPL-575	3/4"	1 1/16"	75	300	117	19 5/8 x 24 1/2 x 26 3/8"
SLPL-650	1"	1 1/2"	50	300	109	19 5/8 x 24 1/2 x 26 3/8"
SLPF-650*	1"	1 1/2"	50	300	142	19 5/8 x 24 1/2 x 26 3/8"
SLPL-675	1"	1 1/2"	75	300	148	21 x 28 1/2 x 30 3/8"
SLPL-750	1 1/2"	1 13/16"	50	250	123	18 x 28 1/2 x 30 3/8"
SLPL-850	1 1/2"	2 1/16"	50	250	138	20 x 28 1/2 x 30 3/8"
SMPL-4100	1 1/2"	1 3/16"	100	2,500	113	18 1/2 x 20 1/2 x 22 7/8"
SMPL-550	3/4"	1 1/16"	50	1,500	89	19 5/8 x 24 1/2 x 26 3/8"
SMPL-575	3/4"	1 1/16"	75	1,500	121	21 x 28 1/2 x 30 3/8"
SMPL-650	1"	1 3/8"	50	2,000	110	21 x 28 1/2 x 30 3/8"
SMPL-675	1"	1 3/8"	75	2,000	135	20 x 28 1/2 x 30 3/8"



T SERIES - EQUIPPED WITH SUPER HUB™

- External fluid path with machined from solid brass 90° full-flow NPT swivel inlet (Zinc plated steel swivel on HP models)
- Swivel Seals: NITRILE
- Sturdy dual pedestal reel features Coxreels' exclusive Super Hub™ dual axle support system
- Available in Medium & High Pressure



MODEL	EZ-Coil® Safety Line	I.D.	FT.	PSI	APRX. LBS.	W x H x L
TSH-N-350	EZ-TSH-350	3/8"	50	300	61	9 3/8 x 21 1/4 x 19 1/2"
TSH-N-375	EZ-TSH-375	3/8"	75	300	82	9 3/8 x 25 1/2 x 24"
TSH-N-3100	EZ-TSH-3100	3/8"	100	300	85	9 3/8 x 25 1/2 x 24"
TSH-N-450	EZ-TSH-450	1/2"	50	300	63	9 3/8 x 21 1/4 x 19 1/2"
TSH-N-475	EZ-TSH-475	1/2"	75	300	82	9 3/8 x 25 1/2 x 24"
TSH-N-4100	EZ-TSH-4100	1/2"	100	300	95	9 3/8 x 25 1/2 x 24"
TSH-N-550	EZ-TSH-550	3/4"	50	300	83	9 7/8 x 25 1/2 x 24"
TSH-N-575	-	3/4"	75	300	93	12 x 25 1/2 x 24"
TSH-N-635	-	1"	35	300	92	10 x 25 1/2 x 24"
TSH-N-650	-	1"	50	300	98	12 x 25 1/2 x 24"



FUEL HOSE T SERIES

- Machined from solid brass 90° full-flow NPT swivel inlet for fuel dispensing applications. Electroless nickel plated steel swivel on 1" models
- Swivel Seals: NITRILE
- Fuel dispensing hose designed to convey non-aromatic fuels including diesel, kerosene, fuel oil & heating oil.

MODEL	EZ-Coil® Safety Line	I.D.	O.D.	FT.	PSI	APRX. LBS.	W x H x L
TSHF-N-550	EZ-TSHF-550	3/4"	1 3/16"	50	300	91	10 x 25 1/2 x 24"
TSHF-N-575	-	3/4"	1 3/16"	75	300	105	12 x 25 1/2 x 24"
TSHF-N-635	-	1"	1 1/2"	35	300	95	9 7/8 x 21 7/8 x 20 3/8"
TSHF-N-650	-	1"	1 1/2"	50	300	101	12 x 25 1/2 x 24"



1125 SERIES

- External fluid path with machined from solid brass 90° full-flow NPT swivel inlet (Nickel plated steel swivel on 1" models)
- Swivel Seals: NITRILE (AFLAS on 1" models)
- Exclusive low profile outlet riser & open drum slot design for flat smooth hose wrap
- All welded steel "A" frame construction for superior reel structure

MODEL	MOTOR OPTION	I.D.	O.D.	FT.	PSI	APRX. LBS.	W x H x L
1125-5-100	Electric Motor Options Available	3/4"	100	3,000	42	26 3/4 x 18 3/4 x 17 5/8"	
1125-5-175		3/4"	175	3,000	50	32 3/4 x 18 3/4 x 17 5/8"	
1125-5-200		3/4"	200	3,000	55	38 3/4 x 18 3/4 x 17 5/8"	
1125-5-250		3/4"	250	3,000	59	42 3/4 x 18 3/4 x 17 5/8"	
1125-6-50		1"	50	3,000	55	32 x 18 1/2 x 17 5/8"	
1125-6-100		1"	100	3,000	69	44 1/2 x 18 1/2 x 17 5/8"	



1175 SERIES

- External fluid path with machined from solid brass 90° full-flow NPT swivel inlet
- Swivel Seals: AFLAS
- Exclusive low profile outlet riser, open drum slot design for flat smooth hose wrap. All welded steel "A" frame construction for superior reel structure

MODEL	MOTOR OPTION	I.D.	O.D.	FT.	PSI	APRX. LBS.	W x H x L
1175-6-50	Electric Motor Options Available	1"	1 7/16"	50	3,000	67	24 1/8 x 26 1/8 x 24"
1175-6-100		1"	1 7/16"	100	3,000	70	28 1/8 x 26 1/8 x 24"
1175-6-150		1"	1 7/16"	150	3,000	75	32 1/8 x 26 1/8 x 24"
1175-6-200		1"	1 7/16"	200	3,000	83	36 5/8 x 26 1/8 x 24"



1185 SERIES

- External fluid path with in-line aluminium straight, full flow NPT swivel inlet
- Swivel Seals: NITRILE
- Exclusive low profile outlet riser, open drum slot design for flat smooth hose wrap. All welded steel "A" frame construction for superior reel structure

MODEL	MOTOR OPTION	I.D.	O.D.	FT.	PSI	APRX. LBS.	W x H x L
1185-1124	Electric Motor Options Available	1 1/2"	2 1/16"	50	600	76	25 x 26 x 24"
1185-1524		1 1/2"	2 1/16"	75	600	81	29 x 26 x 24"
1185-2024		1 1/2"	2 1/16"	100	600	94	33 1/2 x 26 x 24"
1185-2528		1 1/2"	2 1/16"	150	600	122	38 1/2 x 30 x 28"



1195 SERIES

- External fluid path with in-line aluminium straight, full flow NPT swivel inlet
- Swivel Seals: VITON®
- Exclusive low profile outlet riser, open drum slot design for flat smooth hose wrap. All welded steel "A" frame construction for superior reel structure

MODEL	MOTOR OPTION	I.D.	O.D.	FT.	PSI	APRX. LBS.	W x H x L
1195-932	Electric Motor Options Available	2"	2 9/16"	50	600	128	22 3/4 x 33 1/4 x 32"
1195-1332		2"	2 9/16"	75	600	148	26 3/4 x 33 1/4 x 32"
1195-2032		2"	2 9/16"	115	600	186	30 3/4 x 33 1/4 x 32"

CHOICE OF MOTORS
1125, 1175, 1185 & 1195



This selection only represents a sample of products applicable in this industry. Please visit us online or consult the factory for more product options.